

Park Vista Community High School School Counseling Department

CLASS OF

2028



Middle School vs. High School

Middle School

- Six class periods per day
- GPA does not carry over year to year
- Points for promotion
- Size of school
 - Woodlands has 1249 students
 - Christa has 1202 students
 - West Boynton has 652 students
- COMPASS program
- Nine weeks tests
- 11-14 year olds



High School

- Seven class periods per day
- GPA is cumulative
- Credits for graduation
- Size of school
 - Park Vista has 2889 students
- NO SUMMER SCHOOL
- Semester exams & EOCs
- 14-20 year olds





Daily Schedule



BLOCK DAY (MOST DAYS ARE BLOCK)

- Per 1/2 7:30 – 9:15 (105 min)
- Per 3/4 9:21 – 11:06 (105 min)
- Per 5 11:12 – 12:09 (57 min)
- Lunch 12:09 – 12:54 (45 min)
- Per 6/7 1:00 – 2:45 (105 min)

7 PERIOD DAY

- Per 1 7:30 – 8:20 (50 min)
- Per 2 8:26 – 9:16 (50 min)
- Per 3 9:22 – 10:12 (50 min)
- Per 4 10:18 – 11:08 (50 min)
- Per 5 11:14 – 12:08 (54 min)
- Lunch 12:08 – 12:53 (45 min)
- Per 6 12:59 – 1:49 (50 min)
- Per 7 1:55 – 2:45 (50 min)

One Lunch

3,000 Students in One Lunch (45 Minutes Long)

Tutoring Available

Some Clubs Meet

Fun Lunchtime Activities

Phones and Other Electronics are Allowed

Bring your own lunch for the first few days until you learn the options that are available.



Dress Code

School is a student's place of business and appropriate dress is important. **DISRUPTIVE CLOTHING IS FORBIDDEN.** The Park Vista Dress Code can be found on our school's website.



Cobra Athletics

Athletic Eligibility Information is on the Park Vista website. Students must maintain a cumulative GPA of at least 2.0 to be academically eligible.

All information about sports can be found on our website at www.palmbeachschools.org/pvchs



Cobra Athletics

Fall

Bowling
Cheerleading (Sideline)
Cross Country
Football
Golf
Swimming & Diving
Volleyball (Girls)

Winter

Basketball
Cheerleading (Competitive)
Soccer
Weightlifting (Girls)
Wrestling

Spring

Baseball
Flag Football
Football
Lacrosse
Softball
Tennis
Track & Field
Volleyball (Boys)
Volleyball (Beach)
Weightlifting (Boys)

Cobra Clubs

Over 40 different on campus clubs to choose from!

Clubs are a great way to meet people who share your interestes, to learn new skills, and to build your resume!



Graduation Requirements

24 Credits

2.0 GPA

Pass FAST ELA

Pass Algebra I EOC

20 Hours of Community Service

Required Courses

4 credits of English

4 credits of Math (including Alg I & Geo)

3 credits of Science (including Bio & a physical sci)

3 credits of Social Studies (including World History, American History, and Econ/Government)

Personal Fitness and a P.E. Elective

1 credit of a performing/fine/practical art

8 elective credits

Refer to the Online
Curriculum Guide



Summer
is a perfect
time to do
this!

Community Service

- Must complete 20 hours of service with a non-profit organization.
- Can begin any time after your last day of 8th grade.
- Document on the PV form found online.
- Bright Futures Scholarships require 75 or 100 hours of service.

Take FSA and EOCs Seriously!

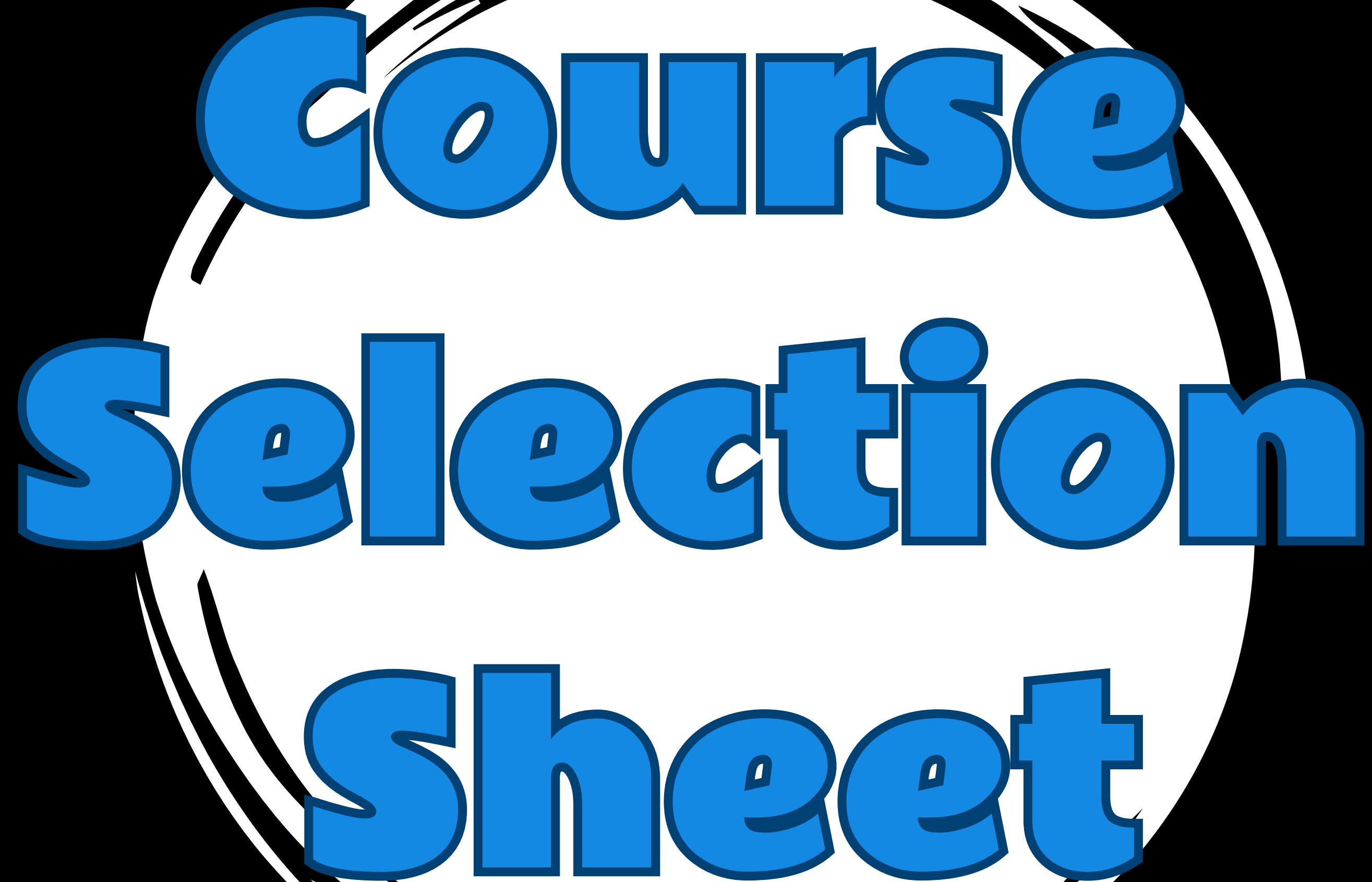


IMPORTANT



Standardized tests determine Intensive Reading, Honors, AICE, AP, etc. for next year and beyond.

- You need a FAST Reading Level of 3, 4, or 5 to enroll in AICE General Papers and AICE Thinking Skills.
- All FAST ELA Level 1 and 2 students will be placed into Intensive Reading.



**Course
Selection
Sheet**

Please return to your school counselor no later than **FRIDAY, MARCH 8, 2024**



PARK VISTA COMMUNITY HIGH SCHOOL



2024-2025 GRADE 9 COURSE SELECTION FORM

LAST NAME	FIRST NAME	PBC STUDENT NUMBER
PARENT CONTACT NUMBER	FSA ELA READING LEVEL/DATE	FSA MATHEMATICS LEVEL/DATE
	7 th Grade FST ELA Level:	7 th Grade FST MATH Level: ALG EOC LEVEL (if taken in grade 7):

See the curriculum guide on our web at <https://www.palmbeachschools.org/Page/9045> for course descriptions. Click on STUDENTS & PARENTS, SCHOOL COUNSELING DEPARTMENT, then CURRICULUM GUIDE.

- Parents and students should choose classes carefully. ***ELECTIVES will NOT be changed next year.***
- Courses in ***Italics*** are included in calculation of ***BRIGHT FUTURES FMS/FAS GPA.***
- Make sure that you have obtained teacher recommendation if the signature box is open.
- Choose 4 electives. Number these 1,2,3,4 in order of preference on the reverse side.
- Failure to return your course selection sheet by the deadline will result in courses being selected for you by your Park Vista School Counselor. **No changes will be permitted.**

All students will be scheduled for levels of English, math and science based upon their FAST ELA/EOC scores and prior performance. **Students with low FAST ELA/EOC scores will be required to drop elective courses to take INTENSIVE READING and/or INTENSIVE MATH to support their regular English and/or math class. Thus, the schedule you choose may be changed when grade 8 PM3 FAST ELA/EOC scores are received.**

Parents must be involved in the student's selection of classes. Students will be expected to remain in selected courses for the *entire* year. Please review this course selection sheet

Please return to your school counselor no later than **FRIDAY, MARCH 8, 2024**



PARK VISTA COMMUNITY HIGH SCHOOL



2024-2025 GRADE 9 COURSE SELECTION FORM

LAST NAME	FIRST NAME	PBC STUDENT NUMBER
PARENT CONTACT NUMBER	FSA ELA READING LEVEL/DATE	FSA MATHEMATICS LEVEL/DATE
	7 th Grade FST ELA Level:	7 th Grade FST MATH Level: ALG EOC LEVEL (if taken in grade 7):

See the curriculum guide on our web at <https://www.palmbeachschools.org/Page/9045> for course descriptions. Click on STUDENTS & PARENTS, SCHOOL COUNSELING DEPARTMENT, then CURRICULUM GUIDE.

- Parents and students should choose classes carefully. ***ELECTIVES will NOT be changed next year.***
- Courses in *Italics* are included in calculation of ***BRIGHT FUTURES FMS/FAS GPA.***
- Make sure that you have obtained teacher recommendation if the signature box is open.
- Choose 4 electives. Number these 1,2,3,4 in order of preference on the reverse side.
- Failure to return your course selection sheet by the deadline will result in courses being selected for you by your Park Vista School Counselor. **No changes will be permitted.**

All students will be scheduled for levels of English, math and science based upon their FAST ELA/EOC scores and prior performance. **Students with low FAST ELA/EOC scores will be required to drop elective courses to take INTENSIVE READING and/or INTENSIVE MATH to support their regular English and/or math class. Thus, the schedule you choose may be changed when grade 8 PM3 FAST ELA/EOC scores are received.**

Parents must be involved in the student's selection of classes. Students will be expected to remain in selected courses for the *entire* year. Please review this course selection sheet

Please return to your school counselor no later than **FRIDAY, MARCH 8, 2024**



PARK VISTA COMMUNITY HIGH SCHOOL



2024-2025 GRADE 9 COURSE SELECTION FORM

LAST NAME	FIRST NAME	PBC STUDENT NUMBER
PARENT CONTACT NUMBER	FSA ELA READING LEVEL/DATE	FSA MATHEMATICS LEVEL/DATE
	7 th Grade FST ELA Level:	7 th Grade FST MATH Level: ALG EOC LEVEL (if taken in grade 7):

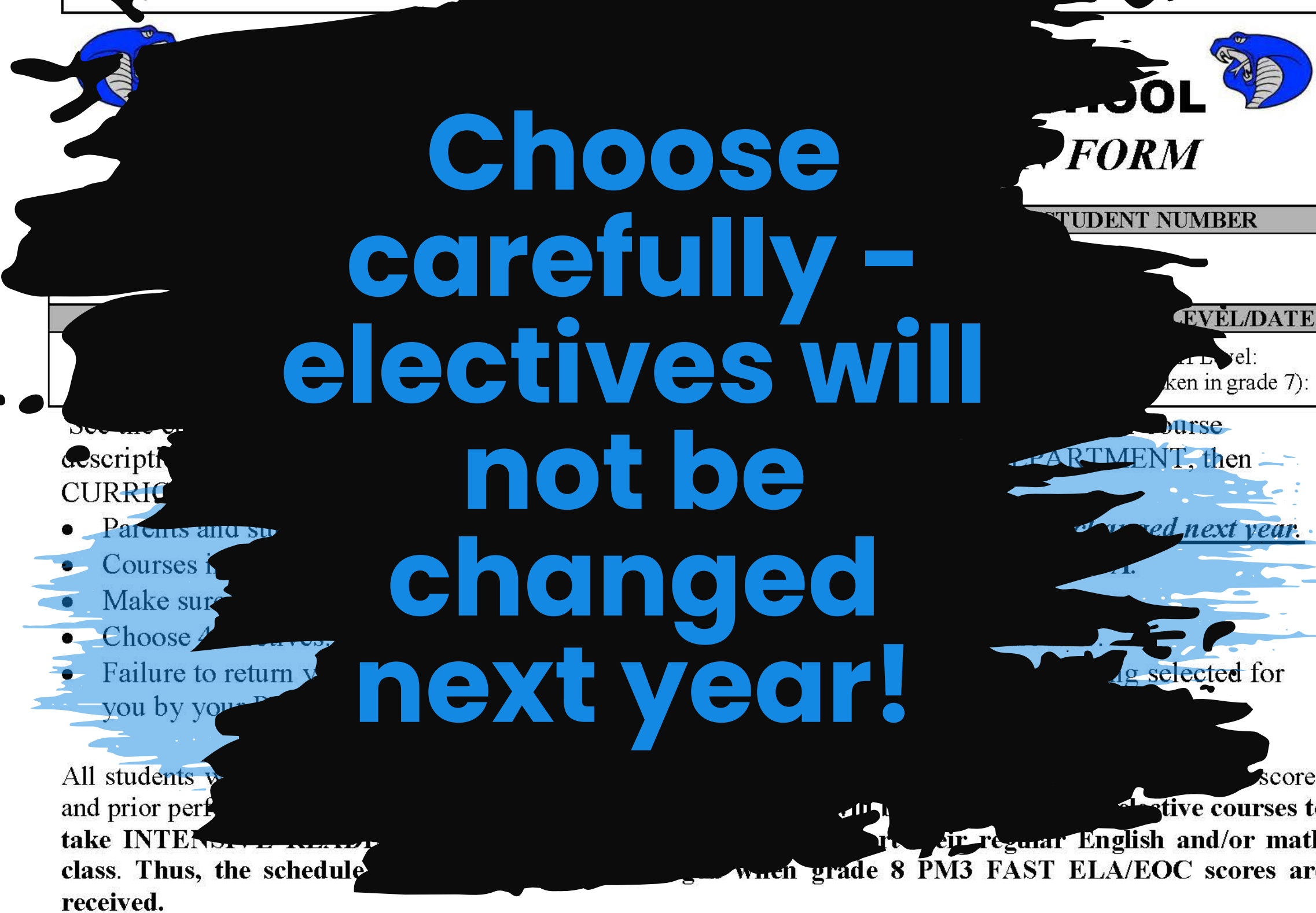
See the curriculum guide on our web at <https://www.palmbeachschools.org/Page/9045> for course descriptions. Click on STUDENTS & PARENTS, SCHOOL COUNSELING DEPARTMENT, then CURRICULUM GUIDE.

- Parents and students should choose classes carefully. ***ELECTIVES will NOT be changed next year.***
- Courses in ***Italics*** are included in calculation of ***BRIGHT FUTURES FMS/FAS GPA***.
- Make sure that you have obtained teacher recommendation if the signature box is open.
- Choose 4 electives. Number these 1,2,3,4 in order of preference on the reverse side.
- Failure to return your course selection sheet by the deadline will result in courses being selected for you by your Park Vista School Counselor. **No changes will be permitted.**

All students will be scheduled for levels of English, math and science based upon their FAST ELA/EOC scores and prior performance. **Students with low FAST ELA/EOC scores will be required to drop elective courses to take INTENSIVE READING and/or INTENSIVE MATH to support their regular English and/or math class. Thus, the schedule you choose may be changed when grade 8 PM3 FAST ELA/EOC scores are received.**

Parents must be involved in the student's selection of classes. Students will be expected to remain in selected courses for the *entire* year. Please review this course selection sheet

Please return to your school counselor no later than **FRIDAY, MARCH 8, 2024**



**Choose
carefully -
electives will
not be
changed
next year!**



**SCHOOL
FORM**

STUDENT NUMBER
LEVEL/DATE
Level: (taken in grade 7):

- Parents and stu
- Courses i
- Make sur
- Choose 4
- Failure to return y
- you by your P

All students w scores
and prior perf elective courses to
take **INTENSIVE READING** in their regular English and/or math
class. Thus, the schedule when grade 8 PM3 FAST ELA/EOC scores are
received.

Parents must be involved in the student's selection of classes. Students will be expected to remain in selected courses for the *entire* year. Please review this course selection sheet

CURRICULUM GUIDE.

- Parents and students should choose classes carefully. ***ELECTIVES will NOT be changed next year.***
- Courses in ***Italics*** are included in calculation of ***BRIGHT FUTURES FMS/FAS GPA.***
- Make sure that you have obtained teacher recommendation if the signature box is open.
- Choose 4 electives. Number these 1,2,3,4 in order of preference on the reverse side.
- Failure to return your course selection sheet by the deadline will result in courses being selected for you by your Park Vista School Counselor. **No changes will be permitted.**

All students will be scheduled for levels of English, math and science based upon their FAST ELA/EOC scores and prior performance. **Students with low FAST ELA/EOC scores will be required to drop elective courses to take INTENSIVE READING and/or INTENSIVE MATH to support their regular English and/or math class. Thus, the schedule you choose may be changed when grade 8 PM3 FAST ELA/EOC scores are received.**

Parents must be involved in the student's selection of classes. Students will be expected to remain in selected courses for the entire year. Please review this course selection sheet carefully and sign below.

Parent Signature _____ Student Signature _____

SCHOOL CURRENTLY ATTENDING:

REQUIRED COURSES

Required courses will be selected by Park Vista Community High School using established guidelines. Do not select any courses in this section. All 7th grade ELA Level 3/4/5 students will be placed in one of the two University of Cambridge AICE diploma program pathways as prescribed by PVCHS administration and supported by the SDPBC. Recommendations may change when grade 8 FAST/BEST scores are analyzed.

REQUIRED COURSES	7 th Grade ELA Level 1/2 (see scores above)	7 th Grade ELA Level 3/4/5 (see scores above) <small>University of Cambridge AICE Diploma Pathway</small>	CAAPP <small>Comprehensive AICE AP Program (7th grade Level 4/5, at least Alg 1 Hon, and Spanish/French 1) University of Cambridge AICE Diploma Pathway</small>
LANGUAGE ARTS	<i>ENGLISH 1</i> (1001310)	<i>AICE GEN PAPER</i> (1009400)	<i>AICE GEN PAPER</i> (1009400A)
SOCIAL STUDIES	<i>WORLD CULTURAL GEO</i> (2103300)	<i>AICE THINKING SKILLS</i> (1700372)	<i>AICE THINKING SKILLS</i> (1700372A) <i>AICE INTERNATIONAL HISTORY</i> (2100490A)
MATH	<i>ALG 1</i> (1200310) <i>ALG 1 HON</i> (1200320)	<i>ALG 1</i> (1200310) <i>ALG 1 HON</i> (1200320)	<i>GEOMETRY HON</i> (1206320A) <i>ALG 2 HON</i> (1200340A)

REQUIRED COURSES

Required courses will be selected by Park Vista Community High School using established guidelines. Do not select any courses in this section. All 7th grade ELA Level 3/4/5 students will be placed in one of the two University of Cambridge AICE diploma program pathways as prescribed by PVCHS administration and supported by the SDPBC. Recommendations may change when grade 8 FAST/BEST scores are analyzed.

REQUIRED COURSES	7 th Grade ELA Level 1/2 (see scores above)	7 th Grade ELA Level 3/4/5 (see scores above) <small>University of Cambridge AICE Diploma Pathway</small>	CAAPP <small>Comprehensive AICE AP Program (7th grade Level 4/5, at least Alg 1 Hon, and Spanish/French 1) University of Cambridge AICE Diploma Pathway</small>
LANGUAGE ARTS	<i>ENGLISH 1 (1001310)</i>	<i>AICE GEN PAPER (1009400)</i>	<i>AICE GEN PAPER (1009400A)</i>
SOCIAL STUDIES	<i>WORLD CULTURAL GEO (2103300)</i>	<i>AICE THINKING SKILLS (1700372)</i>	<i>AICE THINKING SKILLS (1700372A)</i> <i>AICE INTERNATIONAL HISTORY (2100490A)</i>
MATH	<i>ALG 1 (1200310)</i> <i>ALG 1 HON (1200320)</i> <i>GEO (1206310)</i> <i>GEO HON (1206320)</i> <i>ALG 2 HON (1200340)</i>	<i>ALG 1 (1200310)</i> <i>ALG 1 HON (1200320)</i> <i>GEO (1206310)</i> <i>GEO HON (1206320)</i> <i>ALG 2 HON (1200340)</i>	<i>GEOMETRY HON (1206320A)</i> <i>ALG 2 HON (1200340A)</i> <i>PRECALCULUS HON (1202340D)</i> <i>AP PRECALCULUS (1202305)</i>
SCIENCE	<i>EARTH SPACE SCIENCE (2001310)</i>	<i>EARTH SPACE SCI HON (2001320)</i> <i>BIOLOGY HON (2000320)</i>	<i>BIOLOGY HON (2000320A)</i>
ADDITIONAL COURSE	<i>INTENSIVE READING (1000412)</i>	<i>ELECTIVE 1 - FOREIGN LANGUAGE IS NOT REQUIRED BUT STRONGLY RECOMMENDED (SEE REVERSE SIDE)</i>	<i>PRE-AICE SPAN 2 (0708534)</i> <i>PRE-AICE SPAN 3 (0708536)</i> <i>PRE-AICE FRENCH 2 (0701396)</i> <i>PRE-AICE FRENCH 3 (0701398)</i>
ELECTIVES	<i>ELECTIVE 1</i>	<i>ELECTIVE 2</i>	<i>ELECTIVE 1</i>
	<i>ELECTIVE 2</i>	<i>ELECTIVE 3</i>	

REQUIRED COURSES

Required courses will be selected by Park Vista based on established guidelines. Do not select any courses in this section if you are a grade 7 ELA Level 3/4/5 student with a score of 4 or 5. The two University of Cambridge AICE Diploma program pathways as prescribed by PVCHS administration are supported by the state. Recommendations may change when grade 8 FAST/BEST scores are analyzed.

REQUIRED COURSES	7 th Grade ELA Level 1/2 (see scores above)	7 th Grade ELA Level 3/4/5 (see scores above) <small>University of Cambridge AICE Diploma Pathway</small>	CAAPP Comprehensive AICE AP Program (7 th grade Level 4/5 at least Alg 1 Hon, and Spanish/French 1) University of Cambridge AICE Diploma Pathway
LANGUAGE ARTS	ENGLISH 1 (1001310)	AICE GEN PAPER (1009400)	AICE GEN PAPER (1009400)
SOCIAL STUDIES	WORLD CULTURAL GEO (2103300)	AICE THINKING SKILLS (1700372A)	AICE THINKING SKILLS (1700372A) AICE INTERNATIONAL HISTORY (2100490A)
MATH	ALG 1 (1200310) ALG 1 HON (1200320) GEO (1206310) GEO HON (1206320) ALG 2 HON (1200340)	ALG 1 (1200310) ALG 1 HON (1200320) GEO (1206310) GEO HON (1206320) ALG 2 HON (1200340)	GEOMETRY HON (1206320A) ALG 2 HON (1200340A) PRECALCULUS HON (1202340D) AP PRECALCULUS (1202305)
SCIENCE	EARTH SPACE SCIENCE (2001310)	EARTH SPACE SCI HON (2001320) BIOLOGY HON (2000320)	BIOLOGY HON (2000320A)
ADDITIONAL COURSE	INTENSIVE READING (1000412)	ELECTIVE 1 - FOREIGN LANGUAGE IS NOT REQUIRED BUT STRONGLY RECOMMENDED (SEE REVERSE SIDE)	PRE-AICE SPAN 2 (0708534) PRE-AICE SPAN 3 (0708536) PRE-AICE FRENCH 2 (0701396) PRE-AICE FRENCH 3 (0701398)
ELECTIVES	ELECTIVE 1	ELECTIVE 2	ELECTIVE 1
	ELECTIVE 2	ELECTIVE 3	

REQUIRED COURSES

Required courses will be selected by Park Vista Community High School using established guidelines. Do not select any courses in this section. All 7th grade ELA Level 3/4/5 students will be placed in one of the two University of Cambridge AICE diploma program pathways as prescribed by PVCHS administration and supported by the SDPBC. Recommendations may change when grade 8 FAST/BEST scores are analyzed.

REQUIRED COURSES	7 th Grade ELA Level 1/2 (see scores above)	7 th Grade ELA Level 3/4/5 (see scores above) <small>University of Cambridge AICE Diploma Pathway</small>	CAAPP <small>Comprehensive AICE AP Program (7th grade Level 4/5, at least Alg 1 Hon, and Spanish/French 1) University of Cambridge AICE Diploma Pathway</small>
LANGUAGE ARTS	<i>ENGLISH 1 (1001310)</i>	<i>AICE GEN PAPER (1009400)</i>	<i>AICE GEN PAPER (1009400A)</i>
SOCIAL STUDIES	<i>WORLD CULTURAL GEO (2103300)</i>	<i>AICE THINKING SKILLS (1700372)</i>	<i>AICE THINKING SKILLS (1700372A)</i> <i>AICE INTERNATIONAL HISTORY (2100490A)</i>
MATH	<i>ALG 1 (1200310)</i> <i>ALG 1 HON (1200320)</i> <i>GEO (1206310)</i> <i>GEO HON (1206320)</i> <i>ALG 2 HON (1200340)</i>	<i>ALG 1 (1200310)</i> <i>ALG 1 HON (1200320)</i> <i>GEO (1206310)</i> <i>GEO HON (1206320)</i> <i>ALG 2 HON (1200340)</i>	<i>GEOMETRY HON (1206320A)</i> <i>ALG 2 HON (1200340A)</i> <i>PRECALCULUS HON (1202340D)</i> <i>AP PRECALCULUS (1202305)</i>
SCIENCE	<i>EARTH SPACE SCIENCE (2001310)</i>	<i>EARTH SPACE SCI HON (2001320)</i> <i>BIOLOGY HON (2000320)</i>	<i>BIOLOGY HON (2000320A)</i>
ADDITIONAL COURSE	<i>INTENSIVE READING (1000412)</i>	<i>ELECTIVE 1 - FOREIGN LANGUAGE IS NOT REQUIRED BUT STRONGLY RECOMMENDED (SEE REVERSE SIDE)</i>	<i>PRE-AICE SPAN 2 (0708534)</i> <i>PRE-AICE SPAN 3 (0708536)</i> <i>PRE-AICE FRENCH 2 (0701396)</i> <i>PRE-AICE FRENCH 3 (0701398)</i>
ELECTIVES	<i>ELECTIVE 1</i>	<i>ELECTIVE 2</i>	<i>ELECTIVE 1</i>
	<i>ELECTIVE 2</i>	<i>ELECTIVE 3</i>	

7th Grade ELA Level 1,2

English 1

World Cultural Geography

Math

Earth Space Science

Intensive Reading

2 Electives

7th Grade ELA Level 3,4,5

AICE General Papers

AICE Thinking Skills

Math

Science

Suggested: Foreign Language

2 Electives

**A University of
Cambridge AICE
Diploma Track**

CAAPP

7th Grade ELA Level 4,5
At least Algebra 1 and
Spanish/French 1 by end of 8th

AICE General Papers

AICE Thinking Skills

AICE International History

Math

Science

Foreign Language

1 Elective

A University of
Cambridge AICE
Diploma Track

Benefits of the AICE Diploma Track

Exposure to College Level Classes

Potential to Earn College Credit

**Pathway to Earn the Florida
Academic Bright Futures
Scholarship**



REQUIRED COURSES

Required courses will be selected by Park Vista Community High School using established guidelines. Do not select any courses in this section. All 7th grade ELA Level 3/4/5 students will be placed in one of the two University of Cambridge AICE diploma program pathways as prescribed by PVCHS administration and supported by the SDPBC. Recommendations may change when grade 8 FAST/BEST scores are analyzed.

REQUIRED COURSES	7 th Grade	7 th Grade	CAAPP
			Comprehensive AICE AP Program (7 th grade Level 4/5, French 1)

Your Park Vista School
Counselor will complete this
part.

		BIOLOGY (2000520)	
ADDITIONAL COURSE	INTENSIVE READING (1000412)	ELECTIVE 1 - FOREIGN LANGUAGE IS NOT REQUIRED BUT STRONGLY RECOMMENDED (SEE REVERSE SIDE)	<i>PRE-AICE SPAN 2 (0708534)</i> <i>PRE-AICE SPAN 3 (0708536)</i> <i>PRE-AICE FRENCH 2 (0701396)</i> <i>PRE-AICE FRENCH 3 (0701398)</i>
ELECTIVES	ELECTIVE 1	ELECTIVE 2	ELECTIVE 1
	ELECTIVE 2	ELECTIVE 3	

ELECTIVES

Please choose four (4) electives and NUMBER THEM IN ORDER OF PREFERENCE (for example: #1 for your 1st choice, #2 for your 2nd choice, etc.). Every effort will be made to give students their first choices subject to course availability. Your choices are final and course selection is for the entire year. If there is an open box to the right of a course, your 8th grade teacher/counselor must sign the line to indicate their recommendation. The \$ symbol indicates material cost/donation requested.

PHYSICAL EDUCATION <i>*SATISFIES PE/PERSONAL FITNESS REQUIREMENT*</i>		
	1501300/1503350 PERSONAL FITNESS/TEAM SPORTS 1 Students will have one of these classes 1 st semester and the other 2 nd semester.	
<i>Personal Fitness and/or PE can be satisfied by participating in 2 seasons of JV or Varsity athletics or taking the courses online. Marching Band/Color Guard satisfies the PE requirement but not the Personal Fitness requirement.</i>		
WORLD LANGUAGES DEPARTMENT <small>NOT REQUIRED FOR HIGH SCHOOL GRADUATION / REQUIRED FOR STATE UNIVERSITY ADMISSION CONSIDERATION</small>		
	0708340 SPANISH 1 "C" OR BETTER IN 8 TH LANGUAGE ARTS & 7 TH GRADE READING LVL 2/3/4/5	
	0708350 SPANISH 2 "C" OR BETTER IN BOTH SEMESTERS OF SPANISH 1	SPANISH 1 TEACHER'S SIGNATURE
	0708360 SPANISH 3 HONORS "C" OR BETTER IN BOTH SEMESTERS OF SPANISH 2	SPANISH 2 TEACHER'S SIGNATURE
	0701394 PRE-AICE FRENCH 1 "C" OR BETTER IN 8 TH LANGUAGE ARTS & 7 TH GRADE READING LVL 2/3/4/5	
	0701396 PRE-AICE FRENCH 2 "C" OR BETTER IN BOTH SEMESTERS OF FRENCH 1	FRENCH 1 TEACHER'S SIGNATURE
MULTIMEDIA COMMUNICATIONS <i>*SATISFIES FINE/PERFORMING ARTS REQUIREMENT*</i>		
	0107440 VISUAL TECH 1*	
	8201210 DIGITAL MEDIA/MULTIMEDIA 1* Graphic Design w/Photoshop	
	8201510 TV PRODUCTION TECH 1*	
	8812110 PRINCIPLES OF ENTREPRENEURSHIP*	

MEDICAL SCIENCE DEPARTMENT Students will have the opportunity to apply for the academy for 10 th grade.		
	8417100 HEALTH SCIENCE A&P (Must have at least a 3.0 GPA)	
AUTOMOTIVE SERVICE TECHNOLOGY DEPARTMENT Students will have the opportunity to apply for the academy for 10 th grade.		
	9504110 AUTO MAINT & LIGHT REPAIR 1 (\$)	
PERFORMING ARTS DEPARTMENT <i>*SATISFIES FINE/PERFORMING ARTS REQUIREMENT*</i>		
	0400310 THEATRE 1 (DRAMA)* (\$)	
	0107410 FILM 1*	
	1303300 CHORUS 1 (SOPRANO-ALTO)* (\$)	After school performances are required.
	1303320 CHORUS 3 (TENOR-BASS)* (\$)	After school performances are required.
	1301320 GUITAR 1* (\$)	
	1302320 BAND 3 – CONCERT BAND* (\$)	BAND TEACHER'S SIGNATURE
	1302420 INSTRU TECNQS 1* (\$) (PERCUSSIONISTS)	BAND TEACHER'S SIGNATURE
	1302530 JAZZ 4 HON* (\$)	BAND TEACHER'S SIGNATURE

ELECTIVES

Please choose four (4) electives and NUMBER THEM IN ORDER OF PREFERENCE (for example: #1 for your 1st choice, #2 for your 2nd choice, etc.). Every effort will be made to give students their first choices subject to course availability. Your choices are final and course selection is for the entire year. If there is an open box to the right of a course, your 8th grade teacher/counselor must sign the line to indicate their recommendation. The \$ symbol indicates material cost/donation requested.

PHYSICAL EDUCATION

SATISFIES PE/PERSONAL FITNESS REQUIREMENT

MEDICAL SCIENCE DEPARTMENT

Students will have the opportunity to apply for the academy for 10th grade.

Choose FOUR electives.

Number them in order of preference. #1 = your first choice, #2 = your second choice.

Get a teacher/counselor recommendation, if required.

CHOOSE CAREFULLY - ELECTIVE CHOICES ARE FINAL!

Elective Choices Are Final!

ELECTIVES

(4) electives and NUMBER THEM IN ORDER OF PREFERENCE (for example: #1 for your 1st choice, #2 for your 2nd choice, etc.). Every effort will be made to give students their first choices if available. Your choices are final and course selection is for the entire year. If there is an unavailability of a course, your 8th grade teacher/counselor must sign the line to indicate their preference. The \$ symbol indicates material cost/donation requested.

PHYSICAL EDUCATION
PE/PERSONAL FITNESS REQUIREMENT*

MEDICAL SCIENCE DEPARTMENT
Students will have the opportunity to apply for the academy for 10th grade.

**Choose FOUR electives.
Number them in order of preference. #1 = your first choice, #2 = your second choice.
Get a teacher/counselor recommendation, if required.
CHOOSE CAREFULLY - ELECTIVE CHOICES ARE FINAL!**

8812110 PRINCIPLES OF ENTREPRENEURSHIP*

1302530 JAZZ 4 HON* (\$)

SIGNATURE
BAND
TEACHER'S

Foreign Language

WORLD LANGUAGES DEPARTMENT

NOT REQUIRED FOR HIGH SCHOOL GRADUATION / REQUIRED FOR STATE UNIVERSITY ADMISSION CONSIDERATION

0708340 *SPANISH 1*

"C" OR BETTER IN 8TH LANGUAGE ARTS & 7TH GRADE READING LVL 2/3/4/5

0708350 *SPANISH 2*

"C" OR BETTER IN BOTH SEMESTERS OF SPANISH 1

SPANISH 1 TEACHER'S
SIGNATURE

0708360 *SPANISH 3 HONORS*

"C" OR BETTER IN BOTH SEMESTERS OF SPANISH 2

SPANISH 2 TEACHER'S
SIGNATURE

0701394 *PRE-AICE FRENCH 1*

"C" OR BETTER IN 8TH LANGUAGE ARTS & 7TH GRADE READING LVL 2/3/4/5

0701396 *PRE-AICE FRENCH 2*

"C" OR BETTER IN BOTH SEMESTERS OF FRENCH 1

FRENCH 1 TEACHER'S
SIGNATURE



Foreign Language

Not a high school graduation requirement. Required for state university admission consideration.

WORLD LANGUAGES DEPARTMENT

REQUIRED FOR HIGH SCHOOL GRADUATION / REQUIRED FOR STATE UNIVERSITY ADMISSION CONSIDERATION

0708340 SPANISH 1

"C" OR BETTER IN 8TH LANGUAGE ARTS & 7TH GRADE READING LVL 2/3/4/5

0708350 SPANISH 2

"C" OR BETTER IN BOTH SEMESTERS OF SPANISH 1

SPANISH 1 TEACHER'S SIGNATURE

0708360 SPANISH 3 HONORS

"C" OR BETTER IN BOTH SEMESTERS OF SPANISH 2

SPANISH 2 TEACHER'S SIGNATURE

0701394 PRE-AICE FRENCH 1

"C" OR BETTER IN 8TH LANGUAGE ARTS & 7TH GRADE READING LVL 2/3/4/5

0701396 PRE-AICE FRENCH 2

"C" OR BETTER IN BOTH SEMESTERS OF FRENCH 1

FRENCH 1 TEACHER'S SIGNATURE



Foreign Language

Left
Column:
Mark to
Select
Course

WORLD LANGUAGES DEPARTMENT		
NOT REQUIRED FOR HIGH SCHOOL GRADUATION / REQUIRED FOR STATE UNIVERSITY ADMISSION CONSIDERATION		
	0708340 SPANISH 1 "C" OR BETTER IN 8 TH LANGUAGE ARTS & 7 TH GRADE READING LVL 2/3/4/5	
	0708350 SPANISH 2 "C" OR BETTER IN BOTH SEMESTERS OF SPANISH 1	SPANISH 1 TEACHER'S SIGNATURE
	0708360 SPANISH 3 HONORS "C" OR BETTER IN BOTH SEMESTERS OF SPANISH 2	SPANISH 2 TEACHER'S SIGNATURE
	0701394 PRE-AICE FRENCH 1 "C" OR BETTER IN 8 TH LANGUAGE ARTS & 7 TH GRADE READING LVL 2/3/4/5	
	0701396 PRE-AICE FRENCH 2 "C" OR BETTER IN BOTH SEMESTERS OF FRENCH 1	FRENCH 1 TEACHER'S SIGNATURE

Right
Column:
Solid =
No
Signature
Needed



Foreign Language

Left
Column:
Mark to
Select
Course

WORLD LANGUAGES DEPARTMENT		
NOT REQUIRED FOR HIGH SCHOOL GRADUATION / REQUIRED FOR STATE UNIVERSITY ADMISSION CONSIDERATION		
	0708340 SPANISH 1 "C" OR BETTER IN 8 TH LANGUAGE ARTS & 7 TH GRADE READING LVL 2/3/4/5	
	0708350 SPANISH 2 "C" OR BETTER IN BOTH SEMESTERS OF SPANISH 1	SPANISH 1 TEACHER'S SIGNATURE
	0708360 SPANISH 3 HONORS "C" OR BETTER IN BOTH SEMESTERS OF SPANISH 2	SPANISH 2 TEACHER'S SIGNATURE
	0701394 PRE-AICE FRENCH 1 "C" OR BETTER IN 8 TH LANGUAGE ARTS & 7 TH GRADE READING LVL 2/3/4/5	
	0701396 PRE-AICE FRENCH 2 "C" OR BETTER IN BOTH SEMESTERS OF FRENCH 1	FRENCH 1 TEACHER'S SIGNATURE

Right
Column:
Blank =
Teacher
Signature



Foreign Language

Left
Column:
Mark to
Select
Course

WORLD LANGUAGES DEPARTMENT
NOT REQUIRED FOR HIGH SCHOOL GRADUATION / REQUIRED FOR STATE UNIVERSITY ADMISSION CONSIDERATION

1	0708340 SPANISH 1 "C" OR BETTER IN 8 TH LANGUAGE ARTS & 7 TH GRADE READING LVL 2/3/4/5	
	0708350 SPANISH 2 "C" OR BETTER IN BOTH SEMESTERS OF SPANISH 1	SPANISH 1 TEACHER'S SIGNATURE
	0708360 SPANISH 3 HONORS "C" OR BETTER IN BOTH SEMESTERS OF SPANISH 2	SPANISH 2 TEACHER'S SIGNATURE
	0701394 PRE-AICE FRENCH 1 "C" OR BETTER IN 8 TH LANGUAGE ARTS & 7 TH GRADE READING LVL 2/3/4/5	
	0701396 PRE-AICE FRENCH 2 "C" OR BETTER IN BOTH SEMESTERS OF FRENCH 1	FRENCH 1 TEACHER'S SIGNATURE

Right
Column:
Solid =
No
Signature
Needed



Foreign Language

Left Column:
Mark to
Select
Course

WORLD LANGUAGES DEPARTMENT
NOT REQUIRED FOR HIGH SCHOOL GRADUATION / REQUIRED FOR STATE UNIVERSITY ADMISSION CONSIDERATION

	0708340 SPANISH 1 "C" OR BETTER IN 8 TH LANGUAGE ARTS & 7 TH GRADE READING LVL 2/3/4/5	
1	0708350 SPANISH 2 "C" OR BETTER IN BOTH SEMESTERS OF SPANISH 1	SPANISH 2 TEACHER'S SIGNATURE
	0708360 SPANISH 3 HONORS "C" OR BETTER IN BOTH SEMESTERS OF SPANISH 2	SPANISH 3 HONORS TEACHER'S SIGNATURE
	0701394 PRE-AICE FRENCH 1 "C" OR BETTER IN 8 TH LANGUAGE ARTS & 7 TH GRADE READING LVL 2/3/4/5	
	0701396 PRE-AICE FRENCH 2 "C" OR BETTER IN BOTH SEMESTERS OF FRENCH 1	FRENCH 2 TEACHER'S SIGNATURE

RFG

Right Column:
Blank =
Teacher
Signature



Physical Education

PHYSICAL EDUCATION

SATISFIES PE/PERSONAL FITNESS REQUIREMENT

1501300/1503350 PERSONAL FITNESS/TEAM SPORTS 1

Students will have one of these classes 1st semester and the other 2nd semester.

Personal Fitness and/or PE can be satisfied by participating in 2 seasons of JV or Varsity athletics or taking the courses online. Marching Band/Color Guard satisfies the PE



Multimedia Communications

MULTIMEDIA COMMUNICATIONS

**SATISFIES FINE/PERFORMING ARTS REQUIREMENT*

0107440 VISUAL TECH 1*

8201210 DIGITAL MEDIA/MULTIMEDIA 1*
Graphic Design w/Photoshop

8201510 TV PRODUCTION TECH 1*

8812110 PRINCIPLES OF ENTREPRENEURSHIP*

9007210 FOUNDATIONS OF PROGRAMMING



Language Arts

LANGUAGE ARTS DEPARTMENT

**SATISFIES FINE/PERFORMING ARTS REQUIREMENT*

	1006300 JOURNALISM I (NEWSPAPER Sem 1 & YEARBOOK Sem 2) Must have "C" or better in 8th-grade Language Arts	LANGUAGE ARTS TEACHER'S SIGNATURE
	1007330 DEBATE 1* READING LEVEL 4/5 (\$100.00 FEES & DUES) <u><i>1 Saturday Competition Per Month Required</i></u>	LANGUAGE ARTS TEACHER'S SIGNATURE



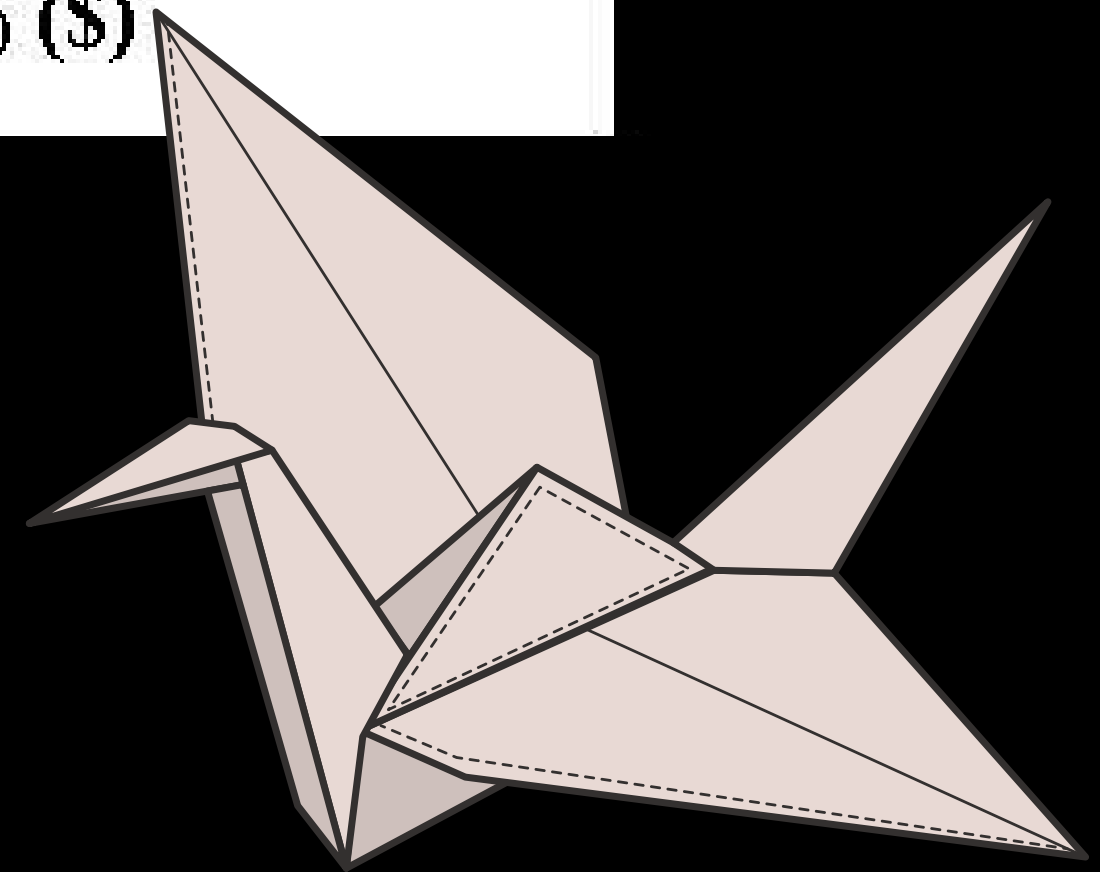
Fine Arts

FINE ARTS DEPARTMENT

**SATISFIES FINE/PERFORMING ARTS REQUIREMENT*

0101300 ART 2-D* (DRAWING & PAINTING) (\$)

0101330 ART 3-D* (THREE DIMENSIONAL ART) (\$)



Performing Arts

PERFORMING ARTS DEPARTMENT
**SATISFIES FINE/PERFORMING ARTS REQUIREMENT*



0400310 THEATRE 1 (DRAMA)* (\$)

0107410 FILM 1*

1303300 CHORUS 1 (SOPRANO-ALTO)* (\$)

After school performances are required.

1303320 CHORUS 3 (TENOR-BASS)* (\$)

After school performances are required.

1301320 GUITAR 1* (\$)

1302320 BAND 3 – CONCERT BAND* (\$)

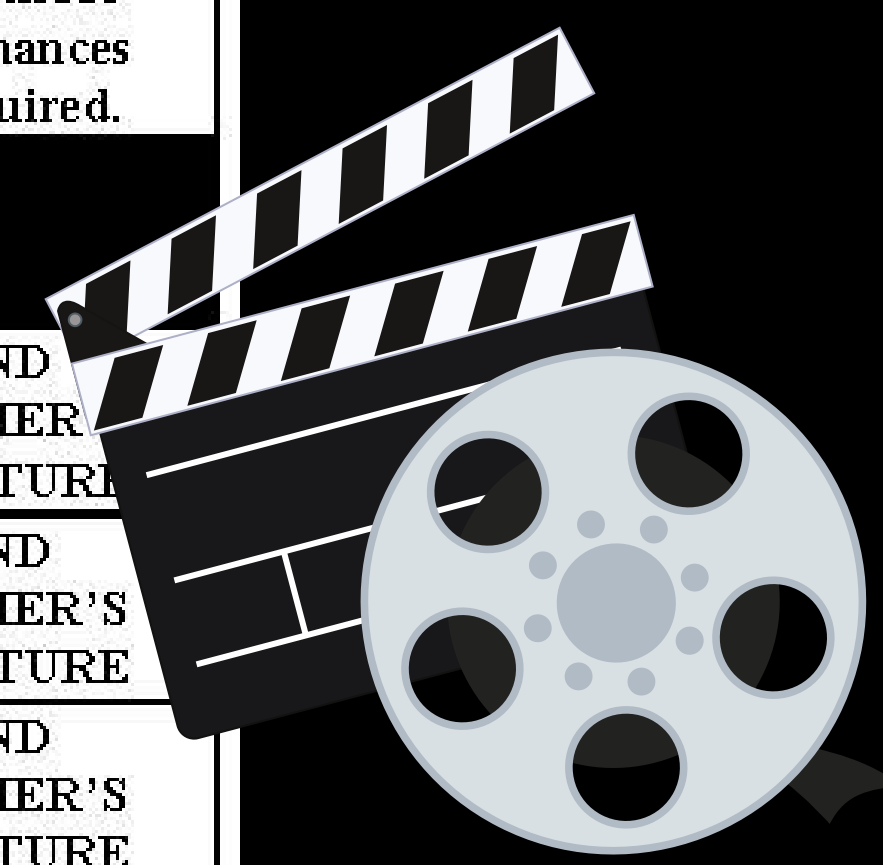
BAND TEACHER'S SIGNATURE

1302420 INSTRU TECNQS 1* (\$) (PERCUSSIONISTS)

BAND TEACHER'S SIGNATURE

1302530 JAZZ 4 HON* (\$)

BAND TEACHER'S SIGNATURE



Automotive Service

AUTOMOTIVE SERVICE TECHNOLOGY DEPARTMENT

Students will have the opportunity to apply for the academy for 10th grade.

9504110 AUTO MAINT & LIGHT REPAIR 1 (\$)

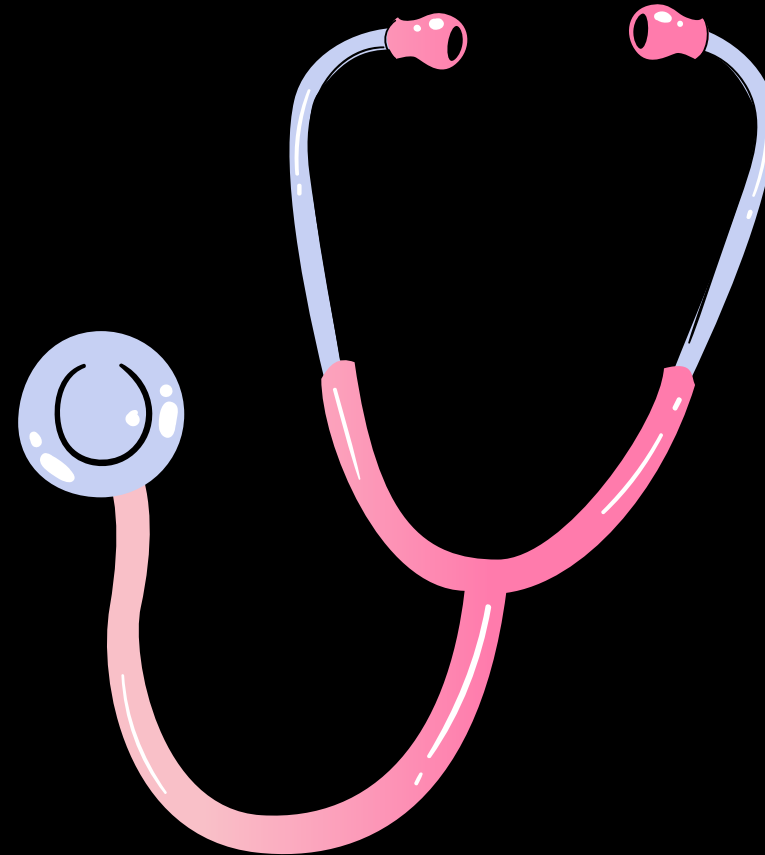


Medical Science

MEDICAL SCIENCE DEPARTMENT

Students will have the opportunity to apply for the academy for 10th grade.

8417100 HEALTH SCIENCE A&P (Must have at least a 3.0 GPA)



What It Should Look Like

Please return to your school counselor no later than **FRIDAY, MARCH 8, 2024**



PARK VISTA COMMUNITY HIGH SCHOOL



2024-2025 GRADE 9 COURSE SELECTION FORM

LAST NAME	FIRST NAME	PBC STUDENT NUMBER
PARENT CONTACT NUMBER	FSA ELA READING LEVEL/DATE	FSA MATHEMATICS LEVEL/DATE
	7 th Grade FST ELA Level:	7 th Grade FST MATH Level: ALG EOC LEVEL (if taken in grade 7):

You and your parent sign on the front.

See the curriculum guide on our web at <https://www.palmbeachschools.org/Page/9045> for course descriptions. Click on STUDENTS & PARENTS, SCHOOL COUNSELING DEPARTMENT, then CURRICULUM GUIDE.

Parents and students should choose classes carefully. ***ELECTIVES will NOT be changed next year.***

Courses in *Italics* are included in calculation of ***BRIGHT FUTURES FMS/FAS GPA.***

Make sure that you have obtained teacher recommendation if the signature box is open.

Choose 4 electives. Number these 1,2,3,4 in order of preference on the reverse side.

Failure to return your course selection sheet by the deadline will result in courses being selected for you by your Park Vista School Counselor. **No changes will be permitted.**

Students will be scheduled for levels of English, math and science based upon their FAST ELA/EOC scores and prior performance. **Students with low FAST ELA/EOC scores will be required to drop elective courses to include INTENSIVE READING and/or INTENSIVE MATH to support their regular English and/or math class. Thus, the schedule you choose may be changed when grade 8 PM3 FAST ELA/EOC scores are received.**

Parents must be involved in the student's selection of classes. Students will be expected to remain in selected courses for the ***entire*** year. Please review this course selection sheet carefully and sign below.

Parent Signature

Mary Parent

Student Signature

John Student

SCHOOL CURRENTLY ATTENDING:

REQUIRED COURSES

Required courses will be selected by Park Vista Community High School using established guidelines. Do not select any courses in this section. All 7th grade ELA Level 3/4/5 students will be placed in one of the two

What It Should Look Like

1	1501300/1503350 PERSONAL FITNESS/TEAM SPORTS 1 Students will have one of these classes 1 st semester and the other 2 nd semester.	
<i>Personal Fitness and/or PE can be satisfied by participating in 2 seasons of JV or Varsity athletics or taking the courses online. Marching Band/Color Guard satisfies the PE requirement but not the Personal Fitness requirement.</i>		
WORLD LANGUAGES DEPARTMENT <small>NOT REQUIRED FOR HIGH SCHOOL GRADUATION / REQUIRED FOR STATE UNIVERSITY ADMISSION CONSIDERATION</small>		
	0708340 SPANISH 1 "C" OR BETTER IN 8 TH LANGUAGE ARTS & 7 TH GRADE READING LVL 2/3/4/5	
2	0708350 SPANISH 2 "C" OR BETTER IN BOTH SEMESTERS OF SPANISH 1	<i>Spanish Teacher's Signature</i>
	0708360 SPANISH 3 HONORS "C" OR BETTER IN BOTH SEMESTERS OF SPANISH 2	SPANISH 2 TEACHER'S SIGNATURE
	0701394 PRE-AICE FRENCH 1 "C" OR BETTER IN 8 TH LANGUAGE ARTS & 7 TH GRADE READING LVL 2/3/4/5	
	0701396 PRE-AICE FRENCH 2 "C" OR BETTER IN BOTH SEMESTERS OF FRENCH 1	FRENCH 1 TEACHER'S SIGNATURE
MULTIMEDIA COMMUNICATIONS <i>*SATISFIES FINE/PERFORMING ARTS REQUIREMENT</i>		
	0107440 VISUAL TECH 1*	
	8201210 DIGITAL MEDIA/MULTIMEDIA 1* Graphic Design w/Photoshop	
	8201510 TV PRODUCTION TECH 1*	
	8812110 PRINCIPLES OF ENTREPRENEURSHIP*	
	9007210 FOUNDATIONS OF PROGRAMMING	
LANGUAGE ARTS DEPARTMENT <i>*SATISFIES FINE/PERFORMING ARTS REQUIREMENT</i>		
4	1006300 JOURNALISM I (NEWSPAPER Sem 1 & YEARBOOK Sem 2) Must have "C" or better in 8th-grade Language Arts	<i>Language Arts Teacher's Signature</i>
	1007330 DEBATE 1* READING LEVEL 4/5 (\$100.00 FEES & DUES) <u>1 Saturday Competition Per Month Required</u>	LANGUAGE ARTS TEACHER'S SIGNATURE

	8417100 HEALTH SCIENCE A&P (Must have at least a 3.0 GPA)	
AUTOMOTIVE SERVICE TECHNOLOGY DEPARTMENT Students will have the opportunity to apply for the academy for 10 th grade.		
	9504110 AUTO MAINT & LIGHT REPAIR 1 (\$)	
PERFORMING ARTS DEPARTMENT <i>*SATISFIES FINE/PERFORMING ARTS REQUIREMENT</i>		
	0400310 THEATRE 1 (DRAMA)* (\$)	
3	0107410 FILM 1*	
	1303300 CHORUS 1 (SOPRANO-ALTO)* (\$)	After school performances are required.
	1303320 CHORUS 3 (TENOR-BASS)* (\$)	After school performances are required.
	1301320 GUITAR 1* (\$)	
	1302320 BAND 3 – CONCERT BAND* (\$)	
	1302420 INSTRU TECNQS 1* (\$) (PERCUSSION)	
	1302530 JAZZ 4 HON* (\$)	
FINE ARTS DEPARTMENT <i>*SATISFIES FINE/PERFORMING ARTS REQUIREMENT</i>		
	0101300 ART 2-D* (DRAWING & PAINTING) (\$)	
	0101330 ART 3-D* (THREE DIMENSIONAL ART) (\$)	

-4 Elective Choices
-Numbered in Order of Preference
-Teacher Signatures, if needed.



Important Details



You will receive your course selection sheets from your counselor. Take it home to discuss it with your parents.

With your parents, choose 4 electives and **NUMBER THEM IN ORDER OF PREFERENCE.**

Return your completed, signed course selection sheet back to your school.



Freshman Orientation **Saturday, August 10th**



Pick Up Schedules!
Campus Tours!
Lockers for Sale!
Club and Sports Info!
Parent Presentation: Freshmenology!
Food Trucks and Fun!

This is an extremely important event for incoming freshmen and their parents. Please make every effort to attend.

**For more information, visit
the Registration
Information for Incoming
9th Graders page found in
the School Counseling
section of the Park Vista
Website.**

Class of 20

